



# MONTHLY MEMBERSHIP PROGRESS REPORT

District 2 S4

Results as of: 10/31/2014

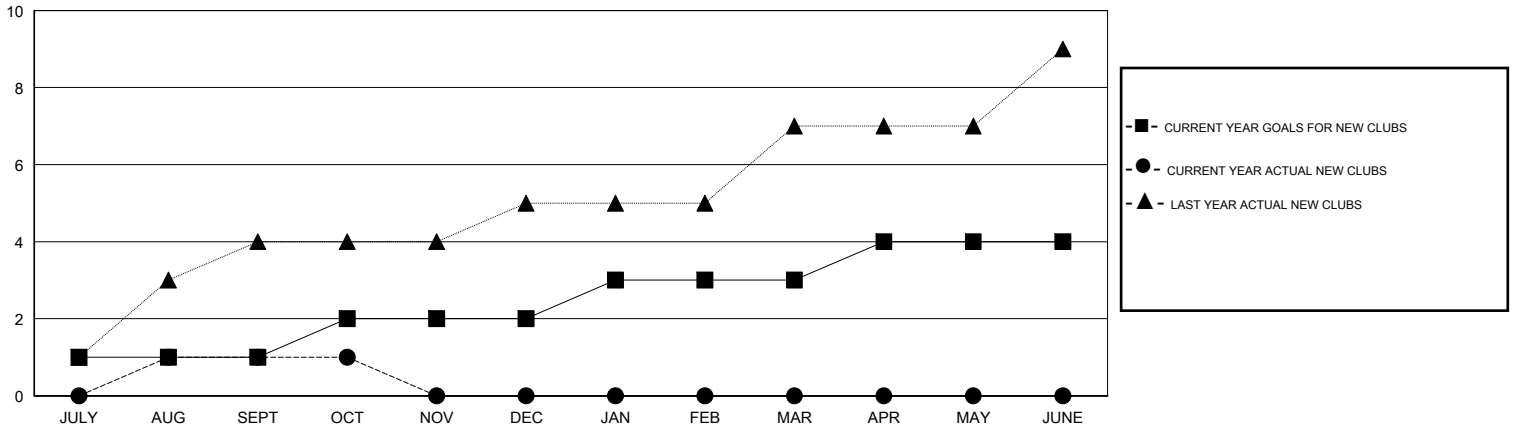
GMT: HAL GRIFFIN

LOCATION TEXAS

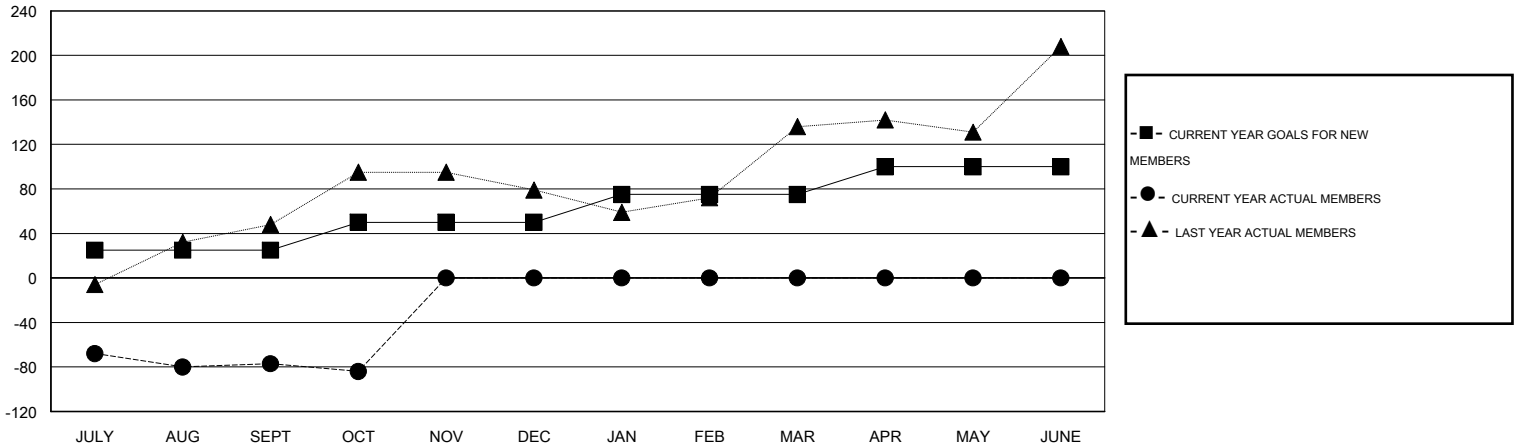
GMT CA 1

Clubs					Members				
RESULTS FOR 2014-2015					RESULTS FOR 2014-2015				
QUARTER	NEW CLUB GOAL	NEW CLUBS	DROPPED CLUBS	NET GAIN/LOSS	QUARTER	NEW MEMBER GOAL	CHARTER AND NEW MEMBERS ADDED	DROPPED MEMBERS	NET GAIN/LOSS
JULY/AUG/SEPT	1	1	1	0	JULY/AUG/SEPT	25	116	193	-77
OCT/NOV/DEC	1	0	0	0	OCT/NOV/DEC	25	40	47	-7
JAN/FEB/MAR	1	0	0	0	JAN/FEB/MAR	25	0	0	0
APR/MAY/JUNE	1	0	0	0	APR/MAY/JUNE	25	0	0	0

GOALS AND ACTUAL NEW CLUBS CUMULATIVE



GOALS AND ACTUAL MEMBERS CUMULATIVE



DROPPED CLUBS: 1	44 CLUBS OF 84 ADDED 1 OR MORE NEW MEMBERS	<u>GENDER DISTRIBUTION</u>	
		MALE	1,484 (60.94%)
<u>DROPPED MEMBERS</u>		FEMALE	951 (39.06%)
DECEASED	8	<a href="#">CLICK HERE FOR HEALTH ASSESSMENT DATA</a>	
CLUB CANCELLED	0		
OTHER	232		
TOTAL	240	FAMILY UNIT MEMBERS	449
		HEAD OF HOUSEHOLD	222
		NON-HEAD OF HOUSEHOLD	227